

STRESS ANALYSIS

CUSTOMER: GENERIC CUSTOMER
 DATE: 02/27/15 DESIGN: DECK15058 REF:
 SALESMAN #

MEMBER TYPE	SIZE	STRESS FACTOR	FACTOR LOAD	COMPOSITE LOAD

JOISTS	2X8	DEFLECTION	193 PSF	
	16"	BENDING	182 PSF	
		SHEAR	146 PSF	
		COMPRESSION	282 PSF	146 PSF

BEAMS	(2) 2x4	DEFLECTION	72 PSF	
		BENDING	63 PSF	
		SHEAR	66 PSF	
		COMPRESSION	393 PSF	63 PSF

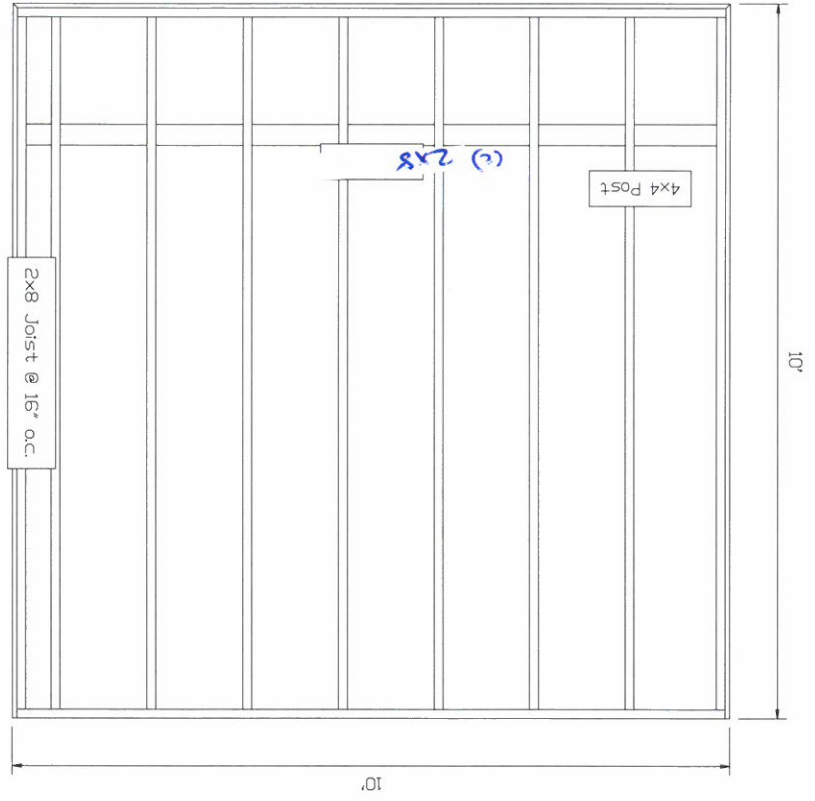
POSTS	4X4	STABILITY BEARING	788 PSF	788 PSF
			863 PSF	

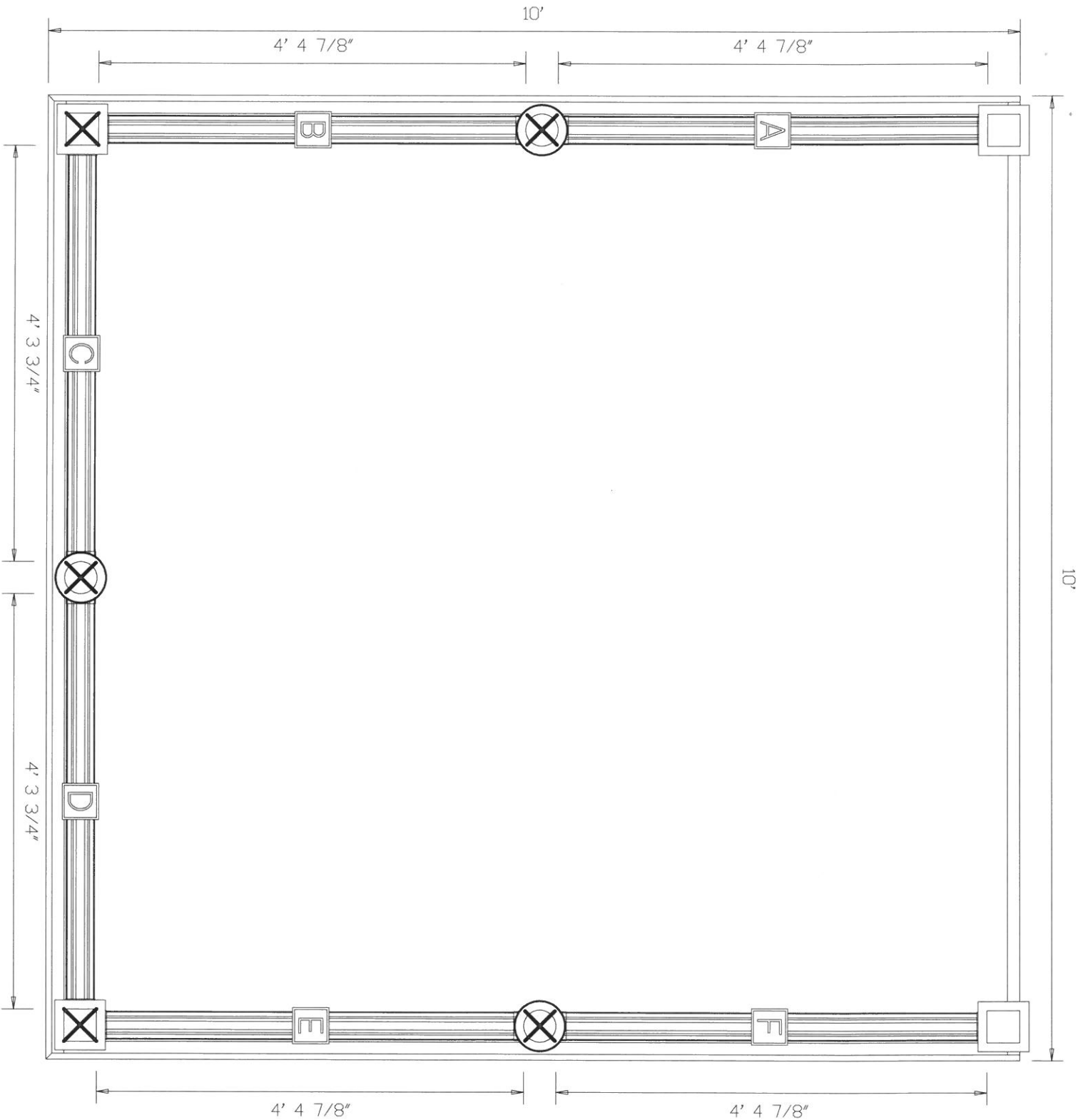
		TOTAL LOAD		63 PSF
		DEAD LOAD		10 PSF
		LIVE LOAD		53 PSF

10x10

Plan View
GENERIC CUSTOMER
02/27/15
Ref: Deck15058
Scale: 3/8" = 1'

Store Name
123 Street Rd.
City, ST
(800) 555 1212





Rail Layout

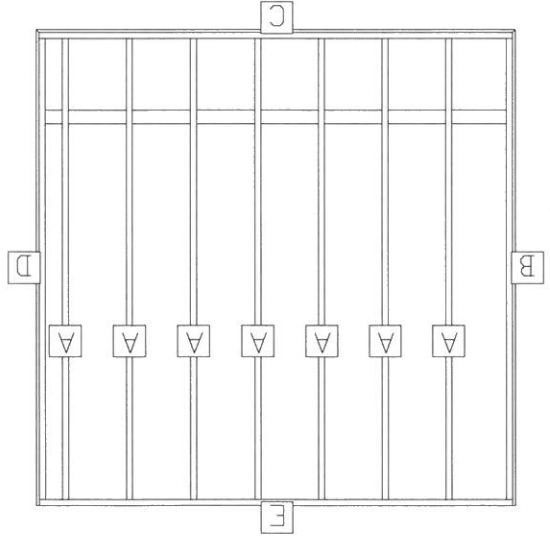
Post	SKU	Description
	DT-PRO4x4PS42_WH	4"X4"x42" Post Sleeve, White
	DT-PRO4x4PS42_WH	4"X4"x42" Post Sleeve, White
	DT-PRO4x4PS42_WH	4"X4"x42" Post Sleeve, White
	DT-PRO4x4PS42_WH	4"X4"x42" Post Sleeve, White

Rails Section	X-ref	Cut From
A, B		DT-PRO_36RRSP120L_WH (10' Round Rail Pickets, 36" Level, White)
E, F		DT-PRO_36RRSP120L_WH (10' Round Rail Pickets, 36" Level, White)
C, D		DT-PRO_36RRSP120L_WH (10' Round Rail Pickets, 36" Level, White)

Design: Deck15058

Cut List
 GENERIC CUSTOMER
 02/27/15
 Ref: Deck15058
 Scale: 1/4" = 1'

Store Name
 123 Street Rd.
 City, ST
 (800) 555 1212



LABEL	LENGTH	BEVELS	LABEL	LENGTH	BEVELS
A Joint (7)	9' 8 1/4"		C rim	9' 10 1/2"	
B fascia	10'		D fascia	10'	
B rim	9' 8 1/4"		D rim	9' 8 1/4"	
C fascia	10'		E rim	9' 10 1/2"	

Beam Layout
 GENERIC CUSTOMER
 02/27/15
 Ref: Deck15058
 Scale: 1/4" = 1'

Store Name
 123 Street Rd.
 City, ST
 (800) 555 1212

