

STRESS ANALYSIS

CUSTOMER: GENERIC CUSTOMER
 DATE: 02/27/15 DESIGN: DECK15058 REF:
 SALESMAN #

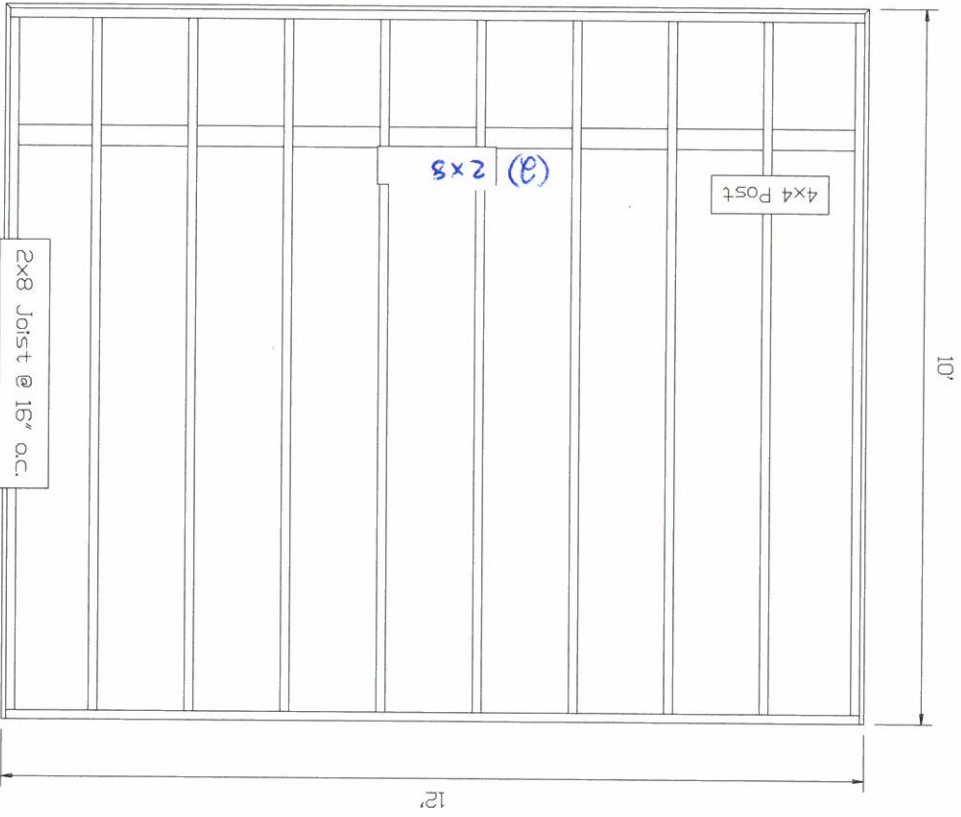
MEMBER TYPE	SIZE	STRESS FACTOR	FACTOR LOAD	COMPOSITE LOAD
JOISTS	2X8 16"	DEFLECTION BENDING SHEAR COMPRESSION	193 PSF 182 PSF 146 PSF 282 PSF	146 PSF

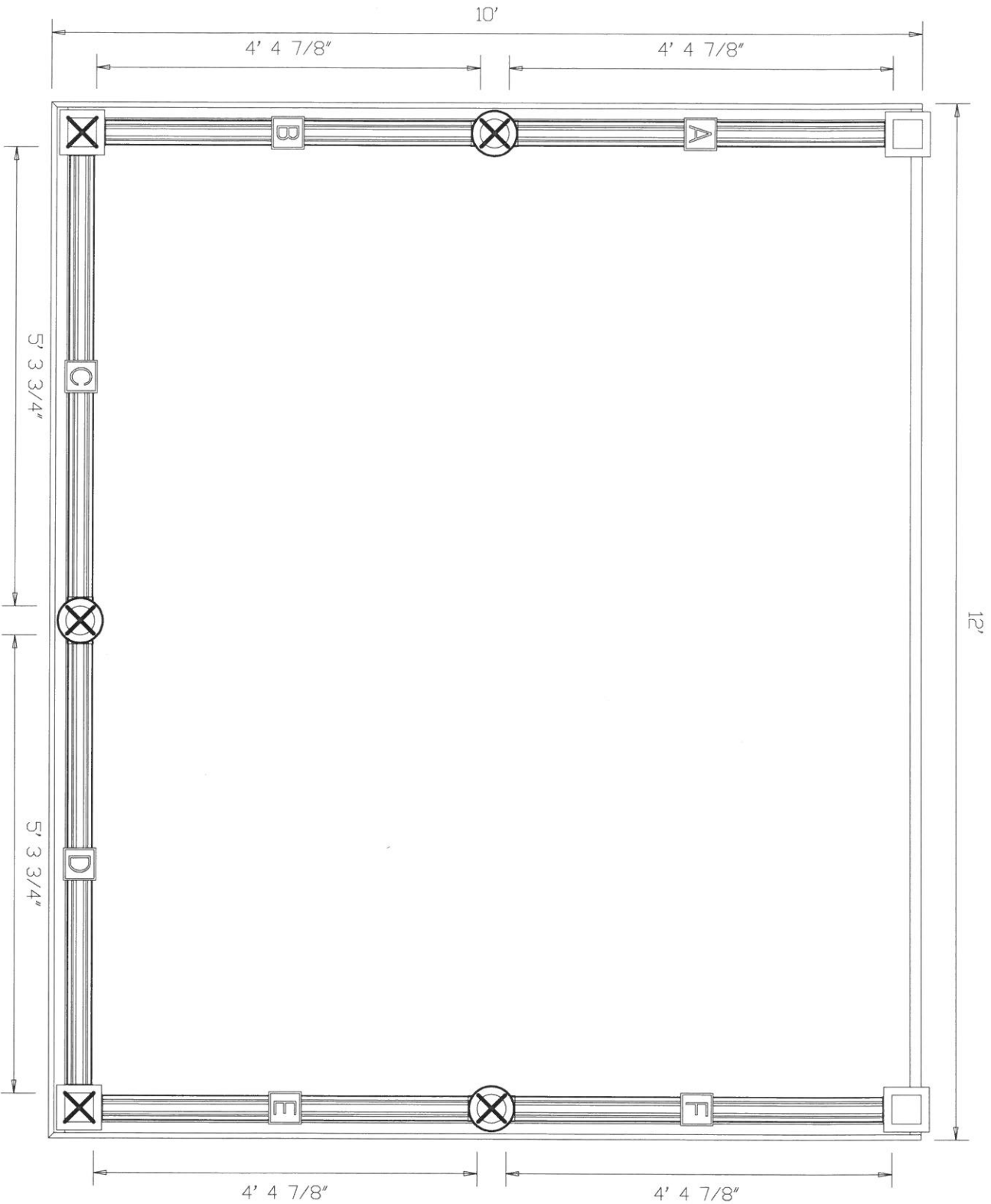
BEAMS (2) 2X8	POSTS 4X4	DEFLECTION BENDING SHEAR COMPRESSION	STABILITY BEARING	TOTAL LOAD DEAD LOAD LIVE LOAD
		307 PSF 179 PSF 125 PSF 393 PSF	655 PSF 717 PSF	125 PSF 10 PSF 115 PSF

10x2

Plan View
GENERIC CUSTOMER
02/27/15
Ref: Deck15058
Scale: 3/8" = 1'

Store Name
123 Street Rd.
City, ST
(800) 555 1212





Post	SKU	Description
⊗	DT-PRO4x4PS42_WH	4"X4"x42" Post Sleeve, White
⊗	DT-PRO4x4PS42_WH	4"X4"x42" Post Sleeve, White
⊗	DT-PRO4x4PS42_WH	4"X4"x42" Post Sleeve, White
⊗	DT-PRO4x4PS42_WH	4"X4"x42" Post Sleeve, White

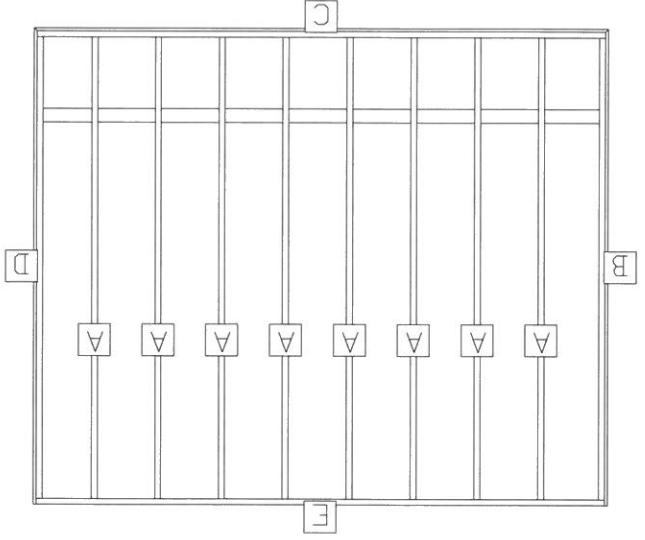
Rails	Section	X-ref	Cut From
A, B			DT-PRO_36RRRSP120L_WH (10' Round Rail Pickets, 36" Level, White)
E, F			DT-PRO_36RRRSP120L_WH (10' Round Rail Pickets, 36" Level, White)
C, D			DT-PRO_36RRRSP120L_WH (10' Round Rail Pickets, 36" Level, White)

Design: Deck15058

Cut List
 GENERIC CUSTOMER
 02/27/15
 Ref: Deck15058
 Scale: 1/4" = 1'

Store Name
 123 Street Rd.
 City, ST
 (800) 555 1212

LABEL	LENGTH	BEVELS	LABEL	LENGTH	BEVELS
A Joint (B)	9' 8 1/4"	1)	C rim	11' 10 1/2"	1)
B fascia	10'	2)	D fascia	10'	2)
B rim	9' 8 1/4"	1)	D rim	9' 8 1/4"	1)
C fascia	12'	2)	E rim	11' 10 1/2"	1)



Beam Layout
 GENERIC CUSTOMER
 02/27/15
 Ref: Deck15058
 Scale: 1/4" = 1'

Store Name
 123 Street Rd.
 City, ST
 (800) 555 1212

BEAM LABEL	BEAM LENGTH	POST COUNT	POST SPACING
A	11' 10 1/2"	3	5' 3 1/2"

Post spacing is measured center-to-center.

