

STRESS ANALYSIS

CUSTOMER: GENERIC CUSTOMER
 DATE: 02/27/15 DESIGN: DECK15058 REF:
 SALESMAN #

MEMBER SIZE STRESS FACTOR COMPOSITE
 TYPE FACTOR LOAD LOAD

JOISTS 2X8 278 PSF
 16" 235 PSF
 DEFLECTION 171 PSF
 BENDING 320 PSF
 SHEAR 171 PSF
 COMPRESSION 171 PSF

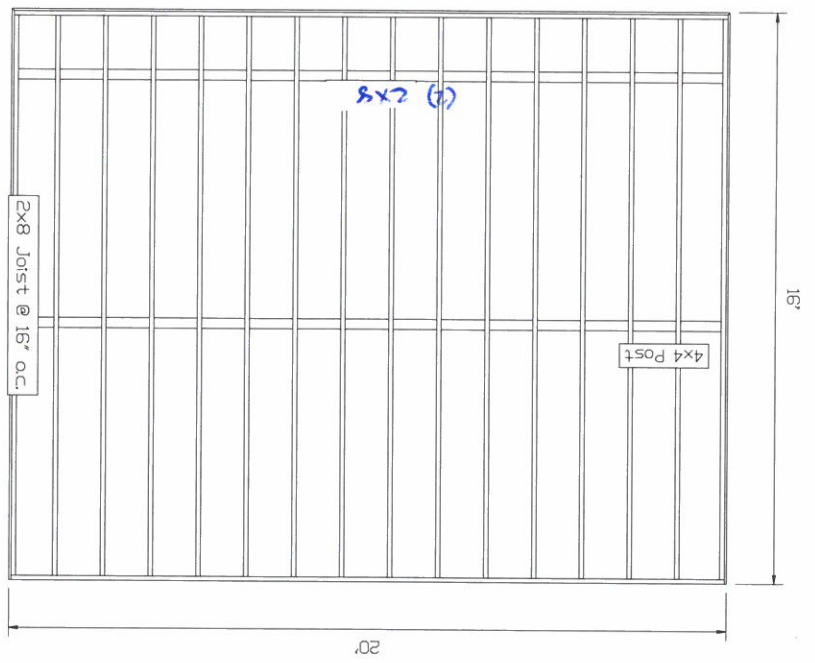
BEAMS *2x8* 74 PSF
 DEFLECTION 66 PSF
 BENDING 72 PSF
 SHEAR 317 PSF
 COMPRESSION 66 PSF

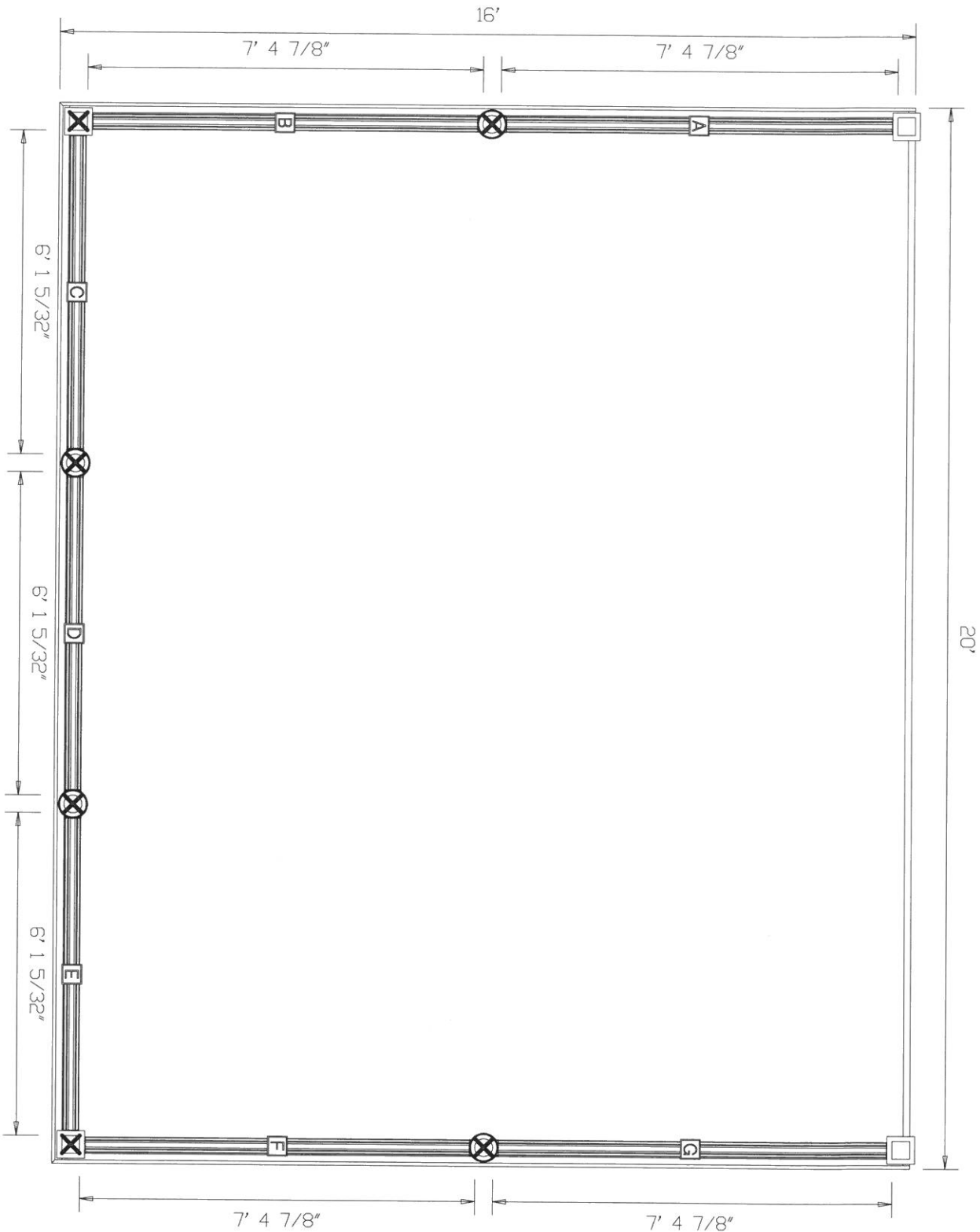
POSTS 4X4 433 PSF
 STABILITY 474 PSF
 BEARING 433 PSF
 TOTAL LOAD 66 PSF
 DEAD LOAD 10 PSF
 LIVE LOAD 56 PSF

16x20

Plan View
GENERIC CUSTOMER
02/27/15
Ref: Deck15058
Scale: 3/16" = 1'

Store Name
123 Street Rd.
City, ST
(800) 555 1212





Rail Layout		Post	
Section	X-ref	SKU	Description
X		DT-PRO4x4PS42_WH	4"X4"x42" Post Sleeve, White
X		DT-PRO4x4PS42_WH	4"X4"x42" Post Sleeve, White
X		DT-PRO4x4PS42_WH	4"X4"x42" Post Sleeve, White
X		DT-PRO4x4PS42_WH	4"X4"x42" Post Sleeve, White

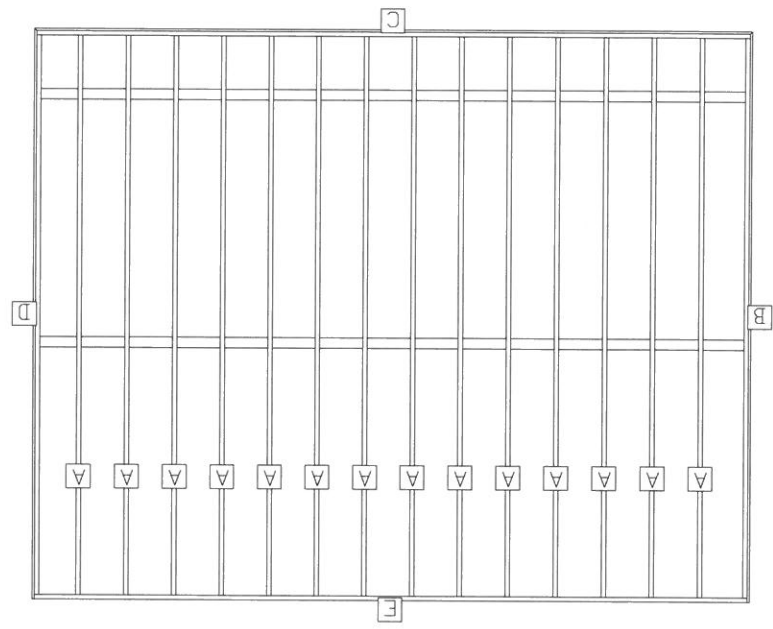
Rails		Cut From	
Section	X-ref	SKU	Description
B		DT-PRO_36SP72L_WH	(6' Square Pickets, 36" Level, White)
G		DT-PRO_36SP72L_WH	(6' Square Pickets, 36" Level, White)
A		DT-PRO_36SP72L_WH	(6' Square Pickets, 36" Level, White)
F		DT-PRO_36SP72L_WH	(6' Square Pickets, 36" Level, White)
E		DT-PRO_36SP96L_WH	(8' Square Pickets, 36" Level, White)
C		DT-PRO_36SP96L_WH	(8' Square Pickets, 36" Level, White)
D		DT-PRO_36SP96L_WH	(8' Square Pickets, 36" Level, White)

Design: Deck15058

Cut List
 GENERIC CUSTOMER
 02/27/15
 Ref: Deck15058
 Scale: 3/16" = 1'

Store Name
 123 Street Rd.
 City, ST
 (800) 555 1212

LABEL	LENGTH	BEVELS	LABEL	LENGTH	BEVELS
A Joist (14)	15' 8 1/4"	19' 10 1/2"	C rim	19' 10 1/2"	1) 45 2) 0
B fascia	16'	16'	D fascia	16'	1) 45 2) 0
B rim	15' 8 1/4"	15' 8 1/4"	D rim	15' 8 1/4"	
C fascia	20'	19' 10 1/2"	E rim	19' 10 1/2"	



Beam Layout
 GENERIC CUSTOMER
 02/27/15
 Ref: Deck15058
 Scale: 3/16" = 1'

Store Name
 123 Street Rd.
 City, ST
 (800) 555 1212

Post spacing is measured center-to-center.

BEAM LABEL	BEAM LENGTH	POST COUNT	POST SPACING
A	19' 10 1/2"	4	6' 2 1/4"
B	19' 10 1/2"	3	9' 3 1/2"

